

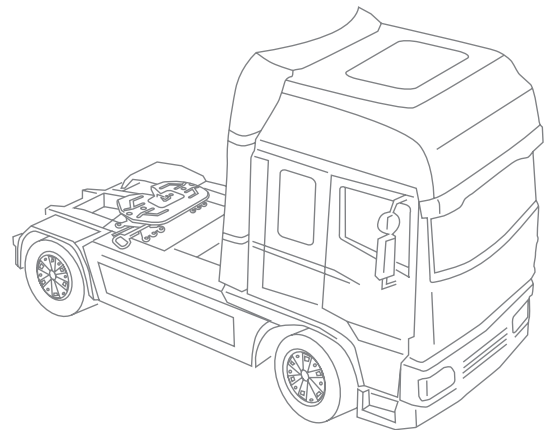
PRODUCT OVERVIEW

FIFTH WHEELS

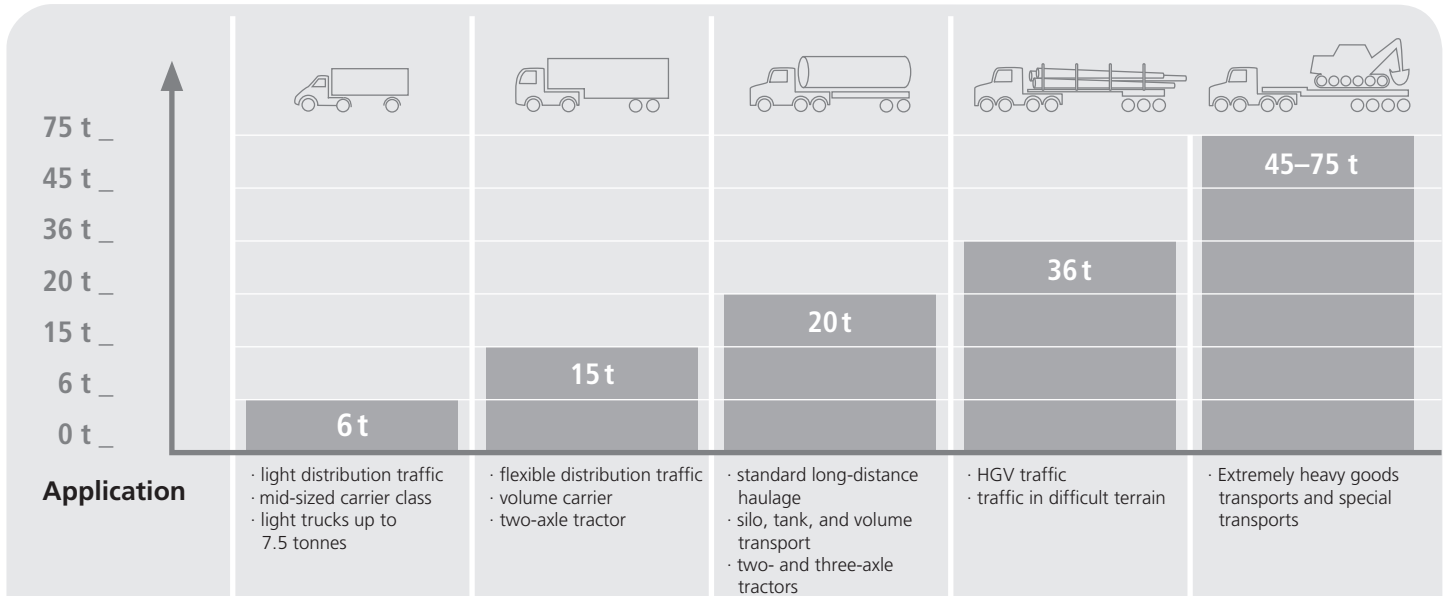
MOUNTING PLATES

SLIDERS

ACCESSORIES



FIFTH WHEEL SELECTION GUIDE



Fifth wheel

GC 6



Imposed load 6,000 kg
Overall height 120 mm
D-value 49 kN

SK-S 36.20 H



Imposed load 15,000 kg
Overall heights 167 mm, 267, 317, 367 mm
D-value 110 kN

FWAL-E



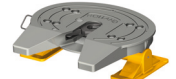
Imposed load 20,000 kg
Overall height 167, 197, 219 mm
D-value 50 kN

SK-HD 38.36



Imposed load 36,000 kg
Overall heights 150, 190 mm
Lock size 2"/3.5"
D-value 162/260 kN

FW0100



Imposed load 45,000 kg
Overall heights 230, 270 mm
D-value 165/170 kN (2")
240 kN (3.5")

Specifications

The load data specified only applies to operation on paved roads and to transport conditions usual in Central Europe. Please contact us regarding operating conditions which deviate from these. We reserve the right to modify dimensions or design if required. No responsibility is taken for the correctness of the details provided, these are solely intended for technical information.

SK-S 36.20



Imposed load 20,000 kg
Overall heights 128, 150, 185, 225, 250 mm
D-value 152 kN

SK-HD 38.36 G



Fifth-wheel for off-road use with gimbal mounting
Lock size 2"/3.5"
Imposed load 23,000 kg (2")
36,000 kg (3.5")
Overall height 290 mm
D-value 162/260 kN

FW0165



Imposed load 74,000 kg
Overall heights 230, 270 mm
D-value 165/170 kN (2")
240 kN (3.5")

FW3510



Imposed load 20,000 kg
Overall heights 150, 180, 200 mm
D-value 150 kN

GES 20



Imposed load 20,000 kg
Overall heights 150, 185, 225, 250 mm
D-value 152 kN

Dear customers, dear readers,

this overview illustrates our current product range of fifth wheels, mounting plates, sliders and accessories: quality components with outstanding performance characteristics proven and tested worldwide.

I sincerely hope this summary is of help to you in your preliminary planning and decision-making and in choosing the optimal product for your transport needs. Should you have any further questions with regard to this or require personal assistance, we at SAF-HOLLAND Verkehrstechnik will be available with support that is competent, reliable and committed. You have my word on it.

Yours sincerely,



Svend Koch
Geschäftsführer

SAF-HOLLAND Verkehrstechnik GmbH
Julius-Bührer-Straße 12
78224 Singen · Germany
Tel +49 7731 1443-0
Fax +49 7731 1443-200
info.vkt@safholland.com
www.safholland.com



GC 6

Lightweight, spheroidal graphite cast iron 6 t fifth wheel optimized for midsized distribution vehicles and volume transports

- 2" fifth wheel with exchangeable wear ring
- Single-handed operation
- Automatic safety lock
- Low-maintenance bearings
- Lubrication channels for effective grease flow
- Wear ring fully compatible with SK-S 36.20
- Connections for optional grease cartridge

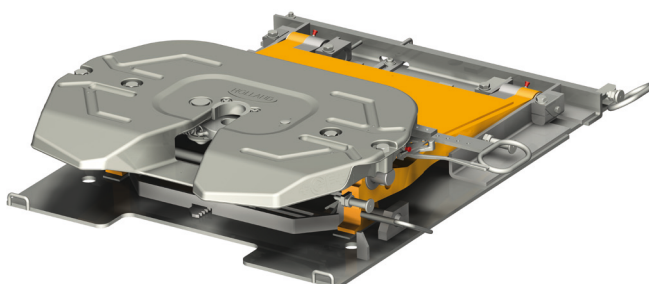


Imposed load	6,000 kg
D-value	49 kN
Overall height	120 mm
EG test no.	e11-00-6737

SK-S 36.20 H Height adjustable

The proven height adjustable spheroidal graphite cast iron 15 t fifth wheel

- Extremely robust and user friendly
- Weight optimised model
- Connections for central lubrication
- Simple wear adjustment
- Automatic safety lock
- Approved for forced steering
- Can be optionally combined with RECOSS system



Imposed load	15,000 kg
D-value	110 kN
Overall heights	167-267 mm 167-317 mm 167-367 mm
EG test no.	e11-00-1381

FWAL-E

WORLD DEBUT

The innovative 20 t forged aluminium fifth wheel

- up to 55 kg lighter
- Greaseless NoLube technology with low-friction, replaceable wear plates and pocket inserts
- Protection against coupling errors
- Option of additional weight reduction with weightsaver mounting plate (156, 180, 205, 243 mm)



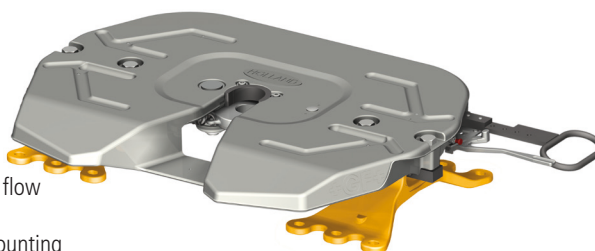
Imposed load	20,000 kg
D-value	150 kN
Overall heights	167, 197, 219 mm
EG test no.	e11-00-6168

GREASE FREE

SK-S 36.20 Standard

The lightweight, spheroidal graphite cast iron 20 t fifth wheel

- Up to 33 kg lighter
- Reliable and robust
- Single handed operation
- Automatic safety lock
- Simple wear adjustment
- Permanent, maintenance-free bearings
- Connections for central lubrication
- Optimised lubrication channels for effective grease flow
- Optionally available with RECOSS® system
- Optionally available with direct or angle bracket mounting

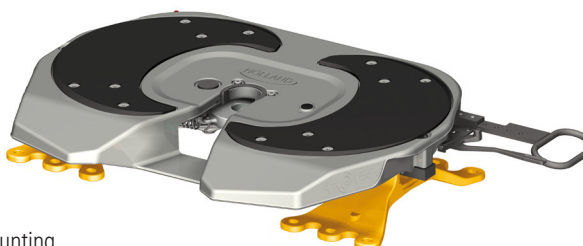


Imposed load	20,000 kg
D-value	152 kN
Overall heights	128, 150, 185, 225, 250 mm
EG test no.	e1-00-0218

SK-S 36.20 W Low maintenance

The lightweight, low maintenance spheroidal graphite cast iron 20 t fifth wheel

- Up to 33 kg lighter
- Designed for highway application
- Less grease consumption
- Easily replaceable low friction wear plates
- Single handed operation
- Automatic safety lock
- Simple and safe wear adjustment
- Permanent, maintenance-free bearings
- Optionally available with RECOSS® system
- Optionally available with direct or angle bracket mounting



Imposed load	20,000 kg
D-value	152 kN
Overall heights	128, 150, 185, 225, 250 mm
EG test no.	e1-00-0218

GES 20

Light 20 t pressed steel fifth wheel with ideal price/performance ratio

- Simple robust and easy to maintain design
- Automatic safety lock
- Simple infinite wear adjustment
- Suitable for steering wedge applications
- Fully compatible to SK-S 36.20 mounting brackets



Imposed load	20,000 kg
D-value	152 kN
Overall heights	150, 185, 225, 250 mm
EG test no.	e11-00-6735

FW3510

Robust cast steel fifth wheel for universal use

- Long service life
- Universal scope of application
- Exemplary reliability
- Low operating costs
- Can be optionally combined with either Kompensator or ISO mounting system
- Available with grease-free NoLube technology
- Suitable for steering wedge applications
- Infinite wear adjustment
- Flat, machined top surface

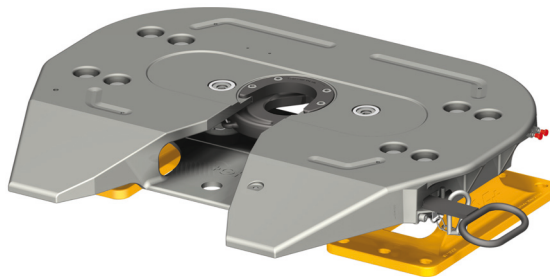


Imposed load	20,000 kg
D-value	150 kN
Overall heights	150, 180, 200 mm
EG test no.	e1-00-0812

SK-HD 38.36

36 t cast steel fifth wheel for heavy transportation

- Permanent, maintenance-free bearings
- Conversion from 3.5" to 2" and vice versa possible
- Simple adjustment of locking mechanism
- Suitable for steering wedge applications
- Optionally available with heavy duty slider or with off-road double oscillating mounting base

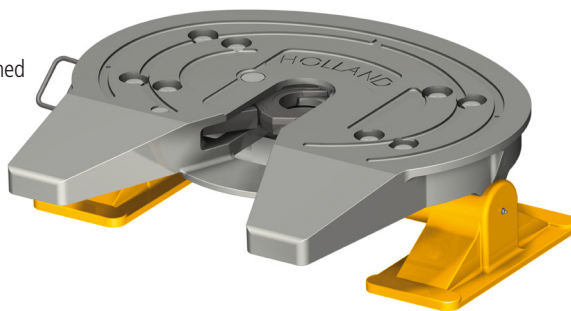


Imposed load	23,000 kg (2") 36,000 kg (3.5")
D-value	162 kN (2") 260 kN (3.5")
Overall heights	150, 190 mm
EG test no.	e1-00-0387 (2") e1-00-0386 (3.5")

FW0100

45 t heavy-duty fifth wheel made from high-strength cast steel for extreme applications

- Forged steel lock, heat-treated and precision machined
- Simple infinitely adjustable locking mechanism
- Recessed lubrication channels for longer grease adhesion
- Simple lubrication
- Available with 2" or 3.5" locks

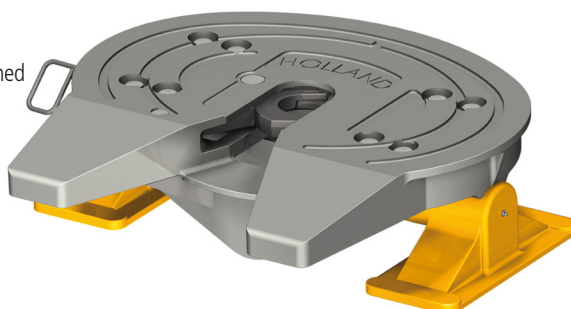


Imposed load	45,000 kg
D-value	165 kN (2") 240 kN (3.5")
Overall heights	230, 270 mm

FW0165

74 t heavy-duty fifth wheel made from high-strength cast steel for special transport

- Forged steel lock, heat-treated and precision machined
- Simple infinitely adjustable locking mechanism
- Recessed lubrication channels for longer grease adhesion
- Simple lubrication
- Available with 2" or 3.5" locks

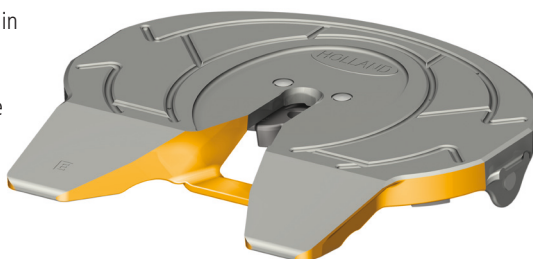


Imposed load	74,000 kg
D-value	165 kN (2") 240 kN (3.5")
Overall height	270 mm

FW3510-TR Terminal Tractor

Ideal 35 t cast steel air-operated fifth wheel – specially designed for terminal tractor applications

- Specially designed and adapted for the heavy-duty use in terminal tractors
- Cast from particularly high-grade steel
- Designed for higher imposed loads and long service life
- Optionally available with manual secondary locking mechanism for trailer movements on public roads
- Optionally available with electronic locking sensor technology
- Suitable for steering wedge applications



Imposed load	up to 36,000 kg 20,000 kg*
D-value	150 kN
EG test no.	e1-00-0812

*when used in highway traffic

FW0E70-T Terminal Tractor

45 t heavy-duty cast steel air operated fifth wheel – specially designed for terminal tractor applications

- Available with either 2" or 3.5" locking mechanism
- Precisely adjusted for heavy-duty use in terminal tractors
- Cast from particularly high-grade steel
- Designed for higher imposed loads and long service life

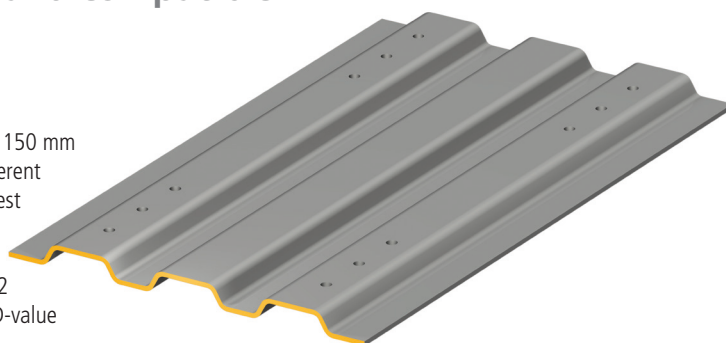


Imposed load	up to 45,000 kg
D-value	165 kN (2") 240 kN (3.5")

MOUNTING PLATES

With and without pre-drilled holes and compatible mounting kits

- Made of high grade, weldable steel plate
- Wide range, optimal design for all tractor and fifth wheels
- 8 individual mounting plate heights: 12, 16, 22, 24, 40, 50, 100 and 150 mm
- The combination of mounting plates and fifth wheels enables 23 different total overall heights, thereby covering all requirements from the lowest to the highest configuration
- Approved for forced steering
- Mounting hole pattern according to DIN 74081, 74084 and ISO 3842
- Wider range of applications due to higher imposed load and higher D-value
- Type approved



KOMPENSATOR MOUNTING SYSTEM

Patent-registered design for compensating torsional forces between tractor and trailer

- Reduction of load on vehicle frame due to torsional forces.
- Particularly advantageous for rigid semitrailers, such as tanker trailers
- Increased relative lateral movement between tractor and semitrailer
- Hole pattern in accordance with ISO 3842



Imposed load	20,000 kg 34,000 kg
D-value	up to 150 kN
Overall heights	245 mm
EG test no.	*e1-00-0200

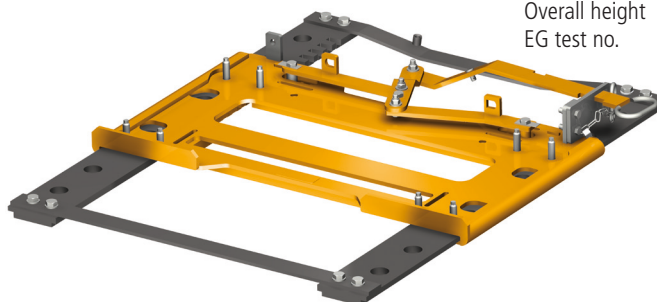
*up to 20 t imposed load

SLIDERS

For optimal utilisation of permissible axle loads and vehicle length

SK-V 20 with 18 t imposed load

- Direct mounting on vehicle frame
- High rigidity – lightweight
- Extra low overall height
- 14 selectable coupling points
- Total slider travel of 525 mm
- Available in 2 different widths
- Single handed operation, optional pneumatic version available
- Approved for forced steering
- Mounting hole pattern according to DIN 74081, DIN 74084 und ISO 3842



Imposed load 18,000 kg
D-value 135 kN
Overall height 35 mm
EG test no. e11-00-5482

ILS with 20 t imposed load

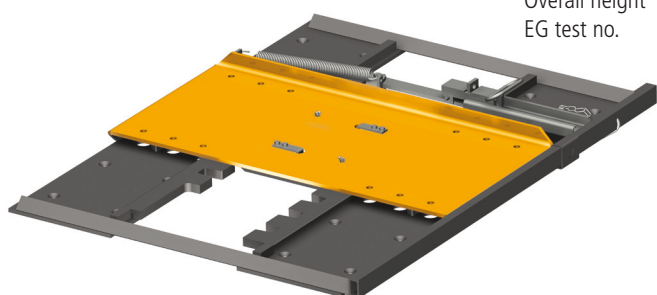
- Available for all standard Holland fifth wheels FW3510 and FW3110
- Standard slider travel of 610 and 1220 mm. Other versions with 915 or 1555 mm slider travel are available on request
- Standard air-operation for all types
- Fifth wheel position can be adjusted in steps of 508 mm spacing
- Pre-drilled hole patterns for direct mounting on vehicle chassis



Imposed load 20,000 kg
D-value 150 kN
Overall height 180, 200, 225 mm
EG test no. e11-00-0056

SK-V 22 with 22 t imposed load

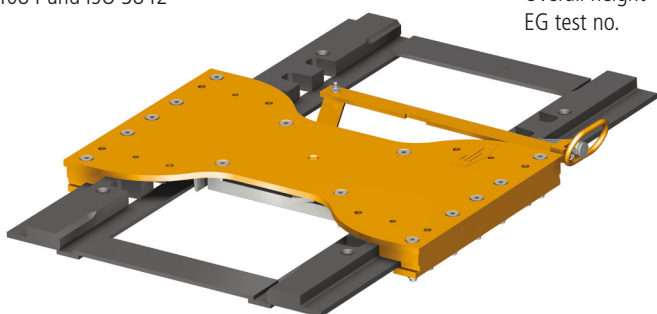
- Easy mounting due to different versions of mounting kits
- One person/single handed operation
- Pre-selectable coupling point
- Automatic locking, free of play, self adjusting
- 7 selectable coupling points
- Total slider travel 630 mm
- 2 designs for frame width of up to 970 mm
- Approved for forced steering



Imposed load 22,000 kg
D-value 162.4 kN
Overall height 45 mm
EG test no. e11-00-0386

SK-V 36 with 36 t imposed load

- For GF heavy duty fifth wheels with 150 and 190 mm overall height
- Mounting hole pattern according to DIN 74081, DIN 74084 und ISO 3842
- High rigidity – lightweight
- Low overall height of 57 mm
- Frame width 760-800 mm
- Dimensions 1400-850 mm
- Single handed operation
- 9 selectable coupling points
- Total slider travel 800 mm
- Approved for forced steering

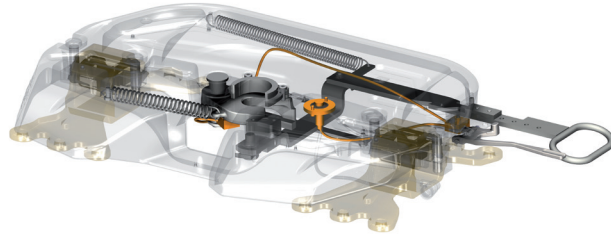


Imposed load 36,000 kg
D-value 260 kN
Overall height 57 mm
EG test no. e11-00-7609

RECOSS®

The Safety Sensor System for the SK-S 36.20 fifth wheel REmote COntrolled Safety System

- Available for all models of fifth wheel type SK-S 36.20
- More safety due to visual and acoustic indication in cockpit
- More convenience due to monitoring of entire coupling process from the cabin
- RECOSS mounting kit is required for installing RECOSS system
- Quick and easy retrofitting



GREASE CARTRIDGE FOR S-KS 36.20 W

Automatic single point long term dispenser for grease

- no manual lubrication of lock mechanism required
- TÜV approved
- Contents: 125 ml
- Operating system: Hydrogen gas formation cell
- Operating pressure max. 3 bar
- Setting: continuous 1-12 Month
- Average period of use approx. 6 Month
- Operating temperature: -20°C up to +55°C ambient temperature
- Recommended storage temperature of 20°C ± 5°C



WHAT YOU CAN ALWAYS RELY ON:

Quality guaranteed

Because we demand the utmost from ourselves, we are committed to our products and services, without any compromises: reassuring for our customers – excellent for us.

Quality Management
ISO/TS 16949



Quality Management
DIN EN ISO 9001



Environment
DIN EN ISO 14001



Premium guarantees for first-class products

Our truck components meet all the usual standards, or even exceed them – worldwide. That is why SAF-HOLLAND are able to offer their customers a special guarantee* for selected products and markets:

500,000 kms up to three years, except wear parts for the following fifth wheels:

FWAL-E

SK-S 36.20 Standard

SK-S 36.20 Low maintenance

FW3510 Standard

*according to the SAF-HOLLAND guarantee conditions

Concrete support for your planning

We would be delighted to provide you with detailed information on the individual products, such as design aids, with all the necessary drawings, facts and dimensions.

HERE'S TO SUCCESSFUL CO-OPERATION!



SAF's history begins in 1881 in a village forge in Germany with the invention of a new plough. The family business soon starts building steel axles for agricultural vehicles, and under the name Otto Sauer Achsenfabrik (SAF) develops into one of the leading manufacturers of trailer axles and suspension systems in Europe.

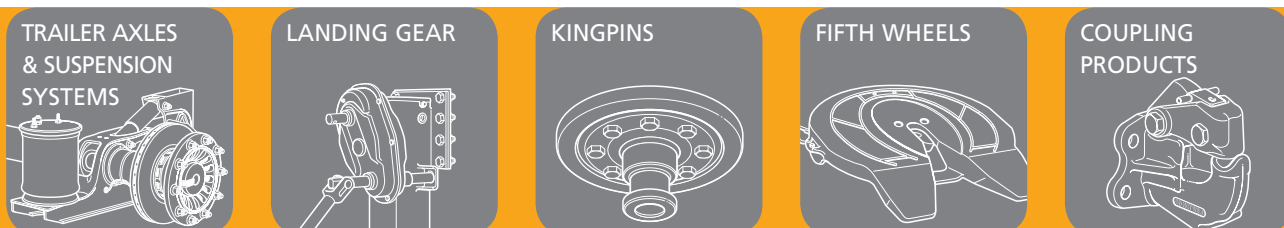
A safety coupling between plough and horse team can be found at the beginning of Holland's history. The Safety Release Clevis Company was founded in South Dakota, USA, in 1910. After its move to Holland, Michigan, the company emerges as one of the largest supplier companies to the commercial vehicles industry under the name The Holland Hitch Company.

The merger of the two companies to form SAF-HOLLAND in 2006 creates one of the leading global suppliers of high-quality components and services for the commercial vehicle industry. Alongside axle and suspension systems for trailers and semi-trailers, the product range also includes kingpins and landing gear as well as fifth wheels for tractors, air suspensions, coupling products and numerous other components for buses and trucks.

In 2008, SAF-HOLLAND takes over Georg Fischer Verkehrstechnik, a leading supplier to the commercial vehicle industry, expanding its product range with GF fifth wheels and kingpins as well as the TRILEX wheel system and accessories for tractors, semitrailers and trailers.

Today the SAF-HOLLAND group is represented on all continents and distributes its products and services worldwide under the brand names SAF and HOLLAND as well as GF, TRILEX and NEWAY. It possesses its own distribution network with global service and dealer locations.

HIGH QUALITY COMPONENTS AND SYSTEMS FOR THE COMMERCIAL VEHICLE INDUSTRY



EUROPE · NORTH AMERICA · SOUTH AMERICA · AFRICA · ASIA · AUSTRALIA

SAF-HOLLAND Verkehrstechnik GmbH

Julius-Bührer-Straße 12 · 78224 Singen · Germany

Tel +49 7731 1443-0 · Fax +49 7731 1443-200 · Hotline Sales +49 7731 1443-344 · info.vkt@safholland.com

www.safholland.com

